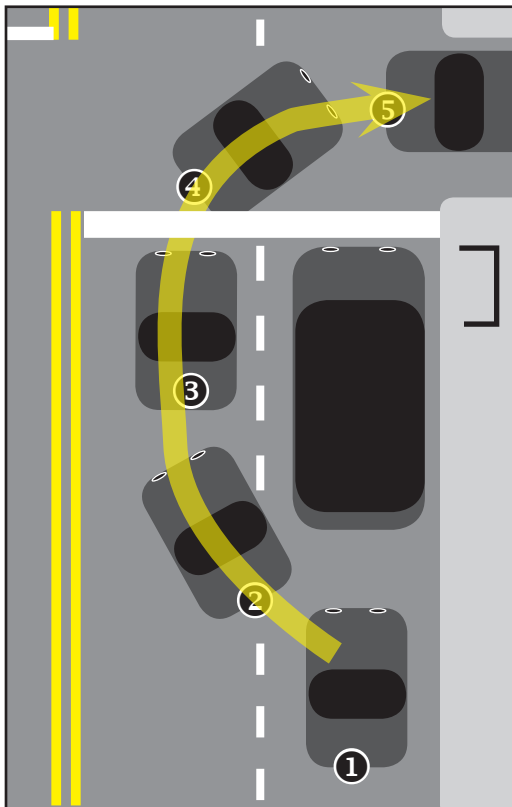


## Illegal Turn Around Bus

It is illegal to drive around a stopped bus in the District of Columbia in order to pass it and make a right-hand turn. In the illustration below, the driver has overtaken the stopped bus to make the turn while it is stopped at a marked bus stop.

The District's law now requires all drivers to merge behind and wait for the vehicle to discharge and pick up passengers and continue in its lane of traffic before making the right turn.



## Who the Law Affects

The Pedestrian Protection Bus Safety Amendment Act of 2006 applies to all drivers in the District of Columbia and is intended to protect all pedestrians, including the passengers of public transit buses, commuter buses, and other multi-passenger vehicles in the city, including Metrobus, the Georgetown Metro Connection, Tourmobile, and commuter buses.



## For More Information

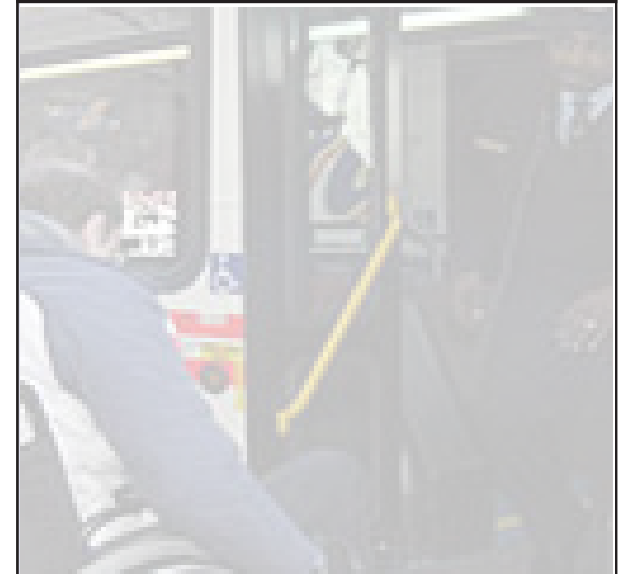
Contact the Metropolitan Police Department's Traffic Safety Unit on 727-4315 or visit our website at [www.mpd.c.dc.gov/trafficsafety](http://www.mpd.c.dc.gov/trafficsafety).



GOVERNMENT OF THE DISTRICT OF COLUMBIA  
Metropolitan Police Department  
300 Indiana Avenue, NW  
Washington, DC 20001

*Revised January 2007*

## Information on the New Pedestrian Bus Safety Act



FOR YOUR SAFETY

*Information for Motorists  
in the District of Columbia on the  
2006 Pedestrian Protection Bus Safety  
Amendment Act*



# Saving a minute can cost others dearly.

It may shave seconds off your commute, but passing a bus to turn in front of it is illegal in the District, and can be deadly for pedestrians.

It is illegal for drivers to make a right turn in front of a bus that is stopped to receive or discharge passengers. That practice is now prohibited under the Pedestrian Protection Bus Safety Amendment Act of 2006, which the DC Council passed in November 2006. Drivers who make this illegal maneuver are subject to a fine of \$100.

## In Brief

After issuing warnings only during December 2006, police officers began writing notices of infraction to motorists who violate the new pedestrian safety law. Violators of the law are subject to a fine of at least \$100.

While the total number of traffic fatalities in DC declined 9 percent in 2006, there were 17 pedestrian fatalities. The safety of pedestrians boarding and exiting buses has been a particular concern.

The new law specifically prohibits a motor vehicle driver from passing to the left and pulling in front of a bus in order to make a right turn, when the bus is at a bus stop or at an intersection to receive or discharge passengers. Rather, a vehicle must stay or merge behind the bus to effect its turn.

The law applies to a wide range of public transit buses that operate in the District, including Metrobuses, the Downtown Circulator, Georgetown "Blue Buses," Maryland and Virginia State commuter charters and Tourmobile vehicles.

## The Law

The D.C. Council enacted the Pedestrian Protection Bus Safety Amendment Act" (Leg. No. A16-0433) and enforcement began on January 1, 2007. Below is the contents of the Act as it is written, which amends the Pedestrian Protection Amendment Act of 1987.

"Sec. 2a. Bus right-of-way at intersections.

"(a) A motor vehicle driver shall be prohibited from passing to the left and pulling in front of a bus to make a right



turn when the bus is at a bus stop at an intersection to receive or discharge passengers; the vehicle shall stay or merge behind the bus to effect its turn.

"(b) A person violating subsection (a) of this section shall be subject to a fine of \$100.00 or twice the fine prescribed for illegal turns, whichever is greater.

"(c) Within 60 days of the effective date of the Pedestrian Protection Bus Safety

Amendment Act of 2006, passed on 2nd reading on July 11, 2006 (Enrolled version of Bill 16-188), the Mayor shall ensure that affixed on the rear of each bus operating in the District of Columbia is a sticker or decal

advising drivers of the prohibition described in subsection (a) of this section.

"(d) Nothing in this section shall relieve the operator of a bus from complying with all applicable traffic regulations or from otherwise exercising due caution in the operation of a bus.

"(e) For the purposes of this section, "Bus" means public transit such as Metrobuses, the Downtown Circulator, the Georgetown Blue Buses, Maryland and Virginia State commuter charters, and Tourmobile vehicles.

