

HELP TAKE A BITE OUT OF GAS STATION THEFT.

Here's how ...



- Pick stations that are well-lighted and have pump video surveillance cameras.
- Always remove your keys and lock the doors while you are pumping gas.
- Keep valuables out of plain view in your vehicle and lock the doors even if you are going inside for a moment.
- Pay attention to your surroundings.
- Don't let your cell phone distract you.

For more tips, visit www.ncpc.org.



McGruff the Crime Dog®



HELP TAKE A BITE OUT OF GAS STATION THEFT.

Here's how ...

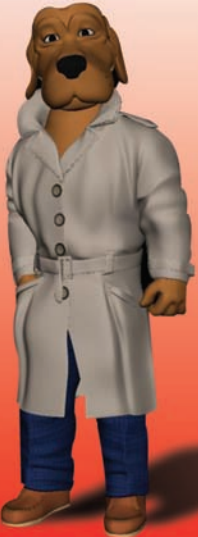


- Pick stations that are well-lighted and have pump video surveillance cameras.
- Always remove your keys and lock the doors while you are pumping gas.
- Keep valuables out of plain view in your vehicle and lock the doors even if you are going inside for a moment.
- Pay attention to your surroundings.
- Don't let your cell phone distract you.

For more tips, visit www.ncpc.org.



McGruff the Crime Dog®



HELP TAKE A BITE OUT OF GAS STATION THEFT.

Here's how ...



- Pick stations that are well-lighted and have pump video surveillance cameras.
- Always remove your keys and lock the doors while you are pumping gas.
- Keep valuables out of plain view in your vehicle and lock the doors even if you are going inside for a moment.
- Pay attention to your surroundings.
- Don't let your cell phone distract you.

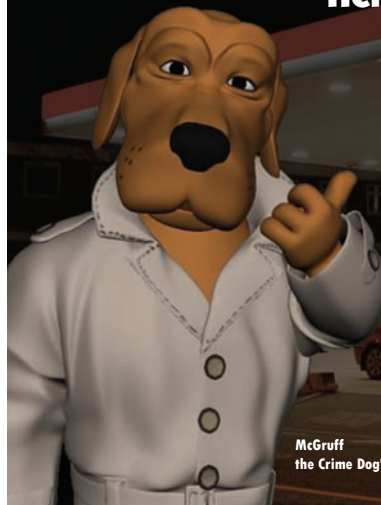
For more tips, visit www.ncpc.org.

McGruff the Crime Dog®



HELP TAKE A BITE OUT OF GAS STATION THEFT.

Here's how ...



- Pick stations that are well-lighted and have pump video surveillance cameras.
- Always remove your keys and lock the doors while you are pumping gas.
- Keep valuables out of plain view in your vehicle and lock the doors even if you are going inside for a moment.
- Pay attention to your surroundings.
- Don't let your cell phone distract you.

For more tips, visit www.ncpc.org.

McGruff the Crime Dog®

