

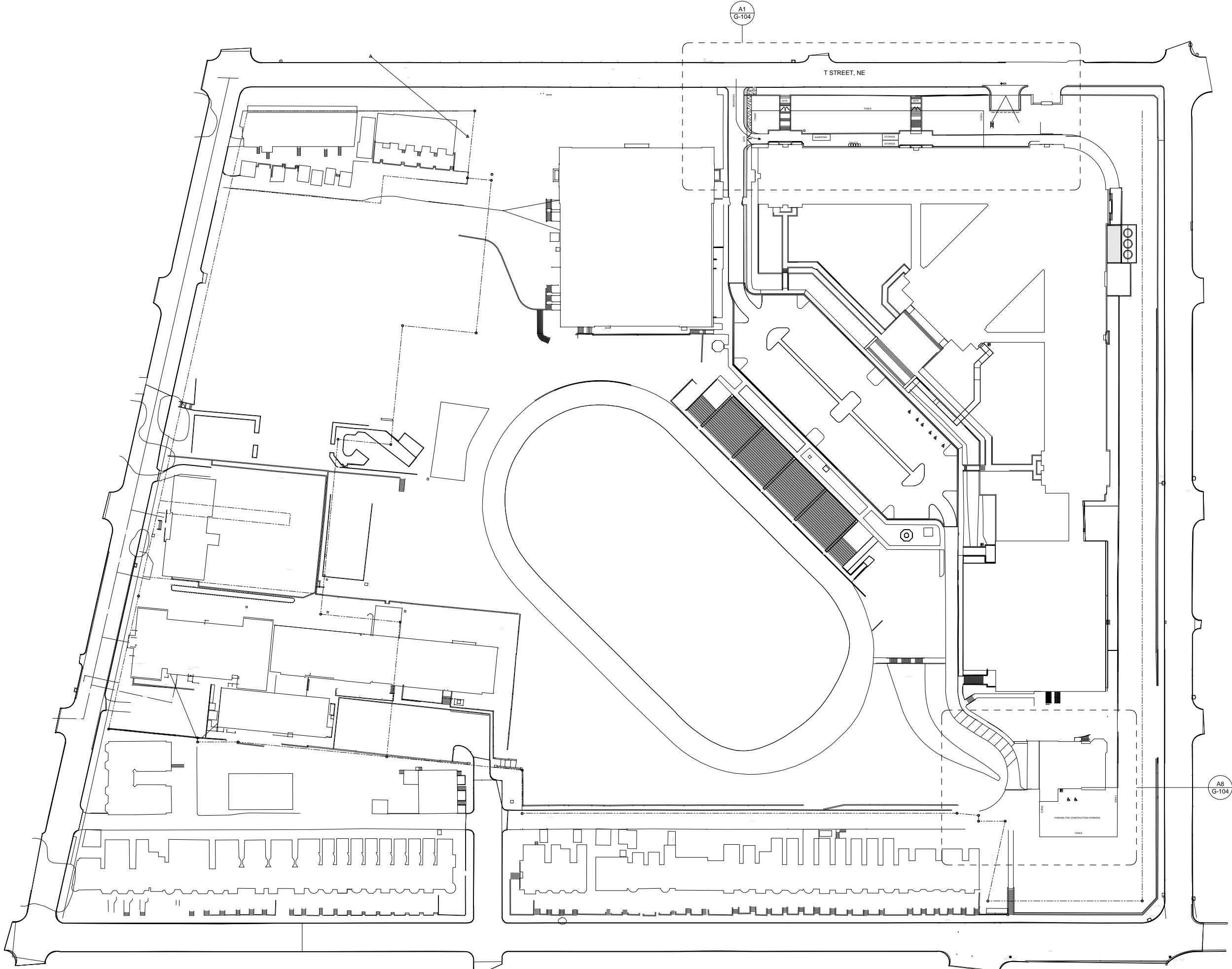
COMMUNITY PRESENTATION
MCKINLEY MIDDLE SCHOOL
BUILD-OUT

SUBMITTED TO DISTRICT OF COLUMBIA
DEPT OF GENERAL SERVICES

NOVEMBER 14, 2012



QUINN EVANS
ARCHITECTS



Department Legend

- Administration
- Core Academic Area
- STEM LAB
- Central Learning Hub
- Maintenance and Custodial
- Circulation
- Mechanical/Electrical
- Misc/Storage
- Restrooms
- STEM Core



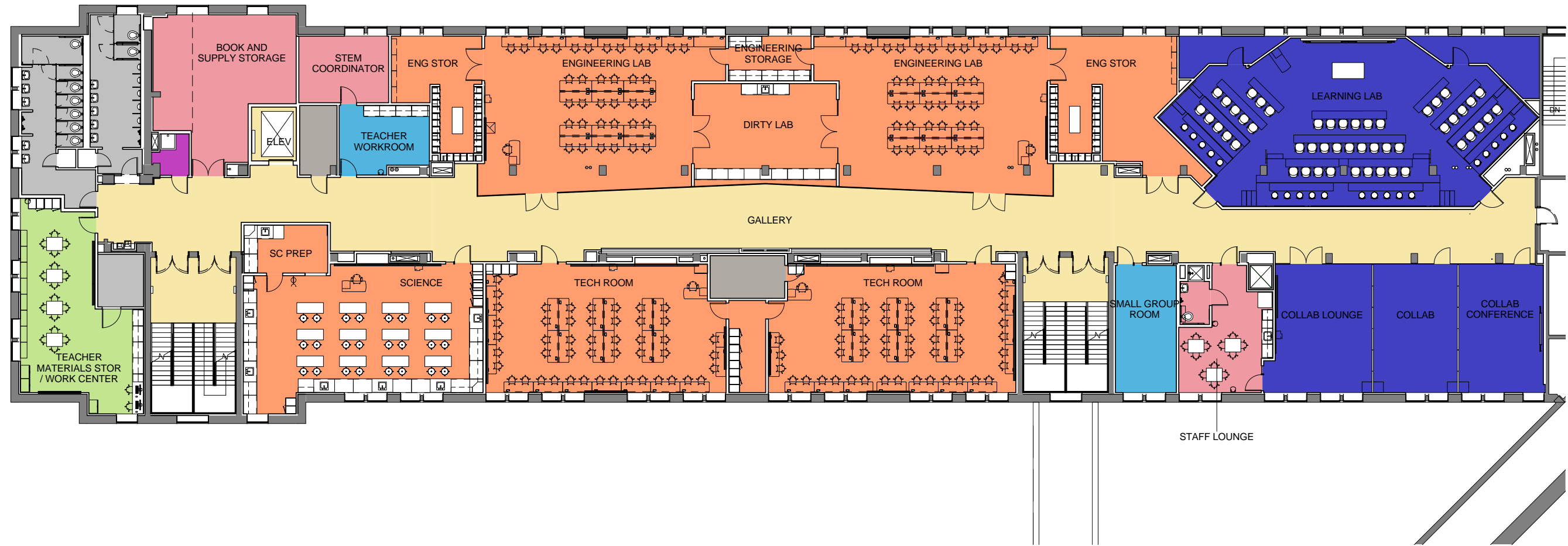
PROPOSED FIRST FLOOR PLAN

MCKINLEY MIDDLE SCHOOL BUILD-OUT
DISTRICT OF COLUMBIA PUBLIC SCHOOLS



Department Legend

- Administration
- Core Academic Area
- STEM LAB
- Central Learning Hub
- Maintenance and Custodial
- Circulation
- Mechanical/Electrical
- Misc/Storage
- Restrooms
- STEM Core



PROPOSED SECOND FLOOR PLAN

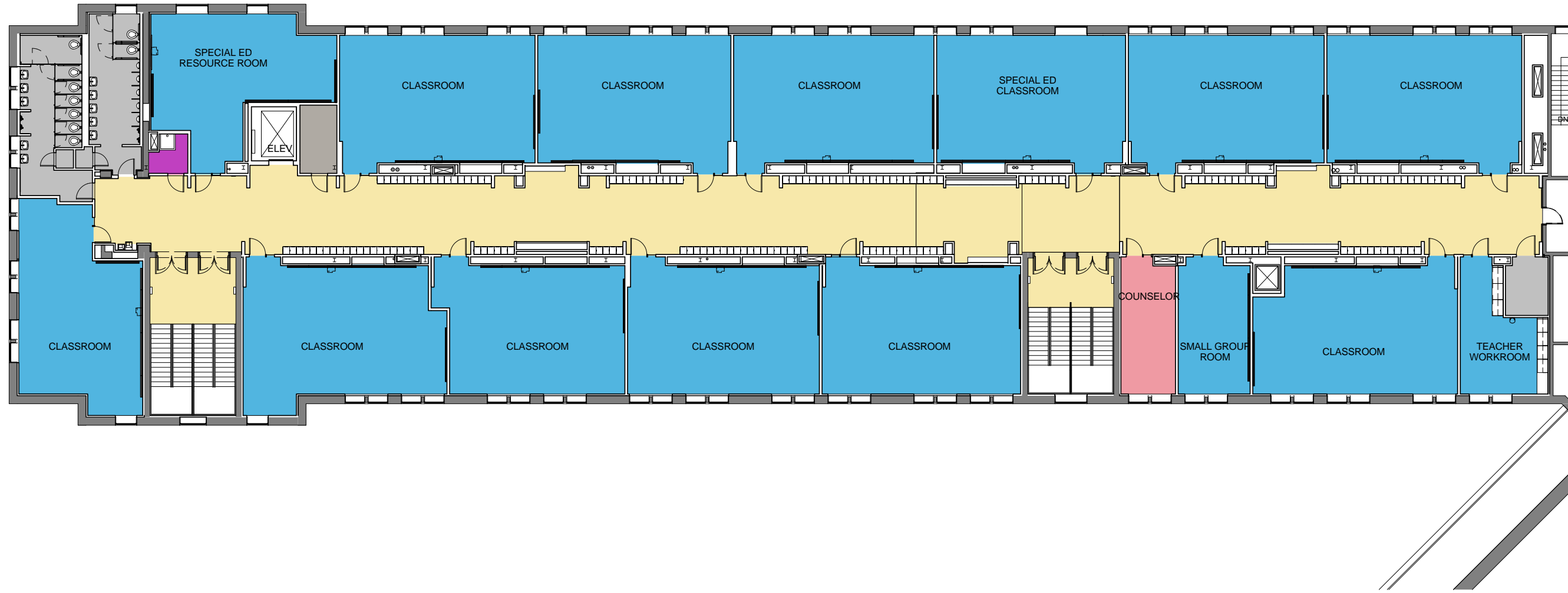
MCKINLEY MIDDLE SCHOOL BUILD-OUT

DISTRICT OF COLUMBIA PUBLIC SCHOOLS

SIT PRESENTATION | 19 DECEMBER 2012

Department Legend

- Administration
- Core Academic Area
- STEM LAB
- Central Learning Hub
- Maintenance and Custodial
- Circulation
- Mechanical/Electrical
- Misc/Storage
- Restrooms
- STEM Core



PROPOSED THIRD FLOOR PLAN

MCKINLEY MIDDLE SCHOOL BUILD-OUT
DISTRICT OF COLUMBIA PUBLIC SCHOOLS





FIRST FLOOR CORRIDOR

MCKINLEY MIDDLE SCHOOL BUILD-OUT

DISTRICT OF COLUMBIA PUBLIC SCHOOLS



QUINN EVANS
ARCHITECTS



SECOND FLOOR CORRIDOR

MCKINLEY MIDDLE SCHOOL BUILD-OUT

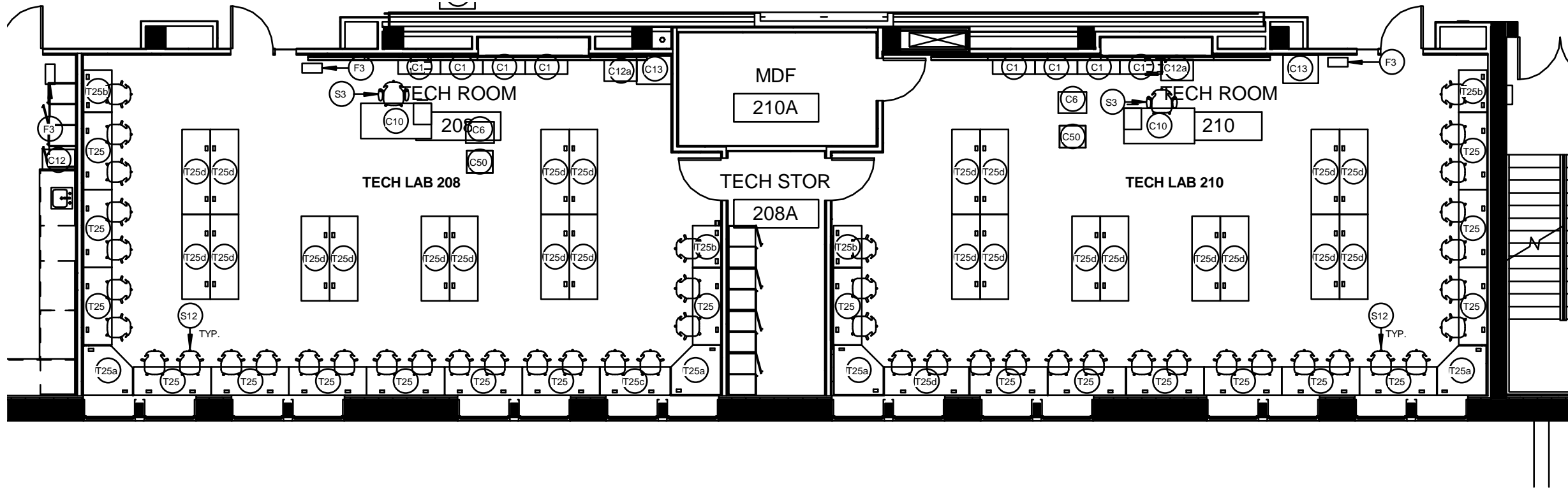
DISTRICT OF COLUMBIA PUBLIC SCHOOLS



QUINN EVANS
ARCHITECTS



THIRD FLOOR CORRIDOR
MCKINLEY MIDDLE SCHOOL BUILD-OUT
DISTRICT OF COLUMBIA PUBLIC SCHOOLS



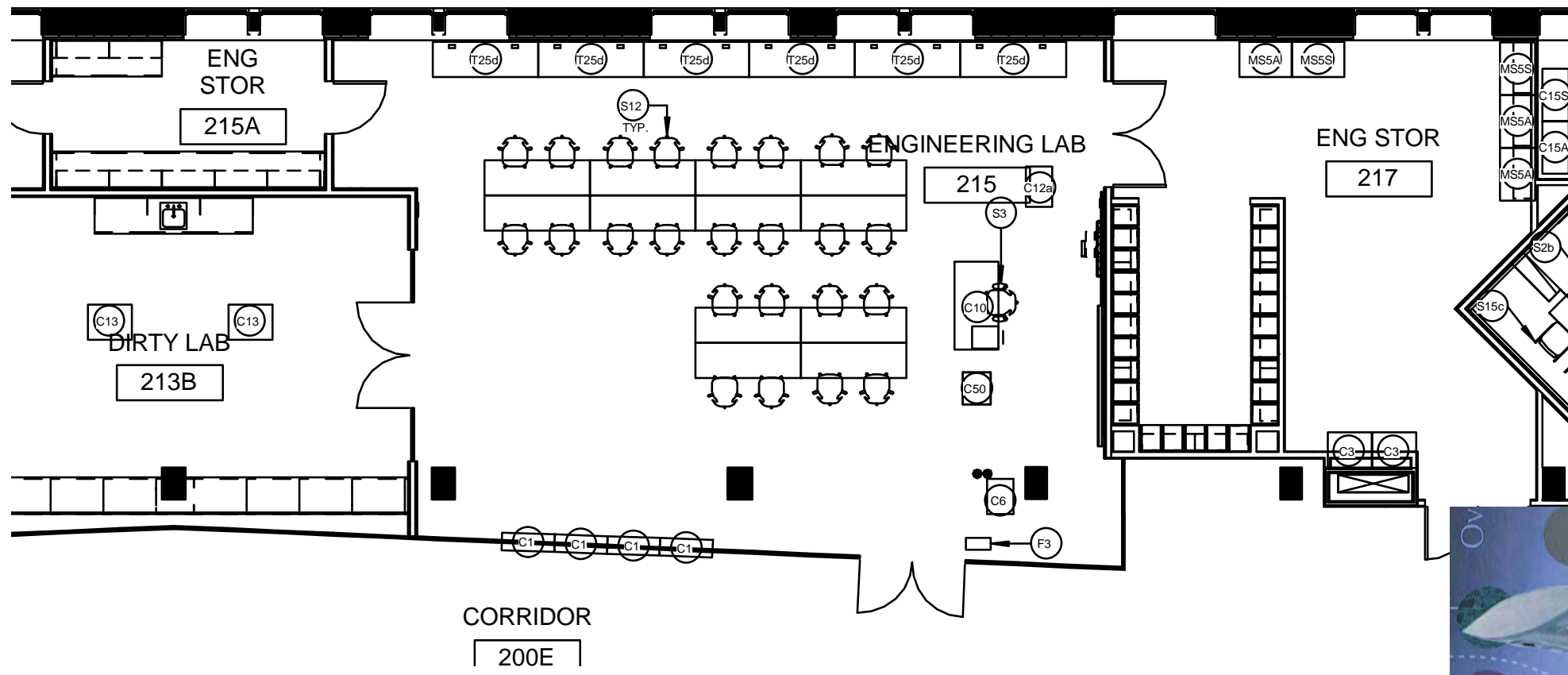
TECHNOLOGY LAB LAYOUT

MCKINLEY MIDDLE SCHOOL BUILD-OUT

DISTRICT OF COLUMBIA PUBLIC SCHOOLS







ENGINEERING LAB LAYOUT

MCKINLEY MIDDLE SCHOOL BUILD-OUT

DISTRICT OF COLUMBIA PUBLIC SCHOOLS

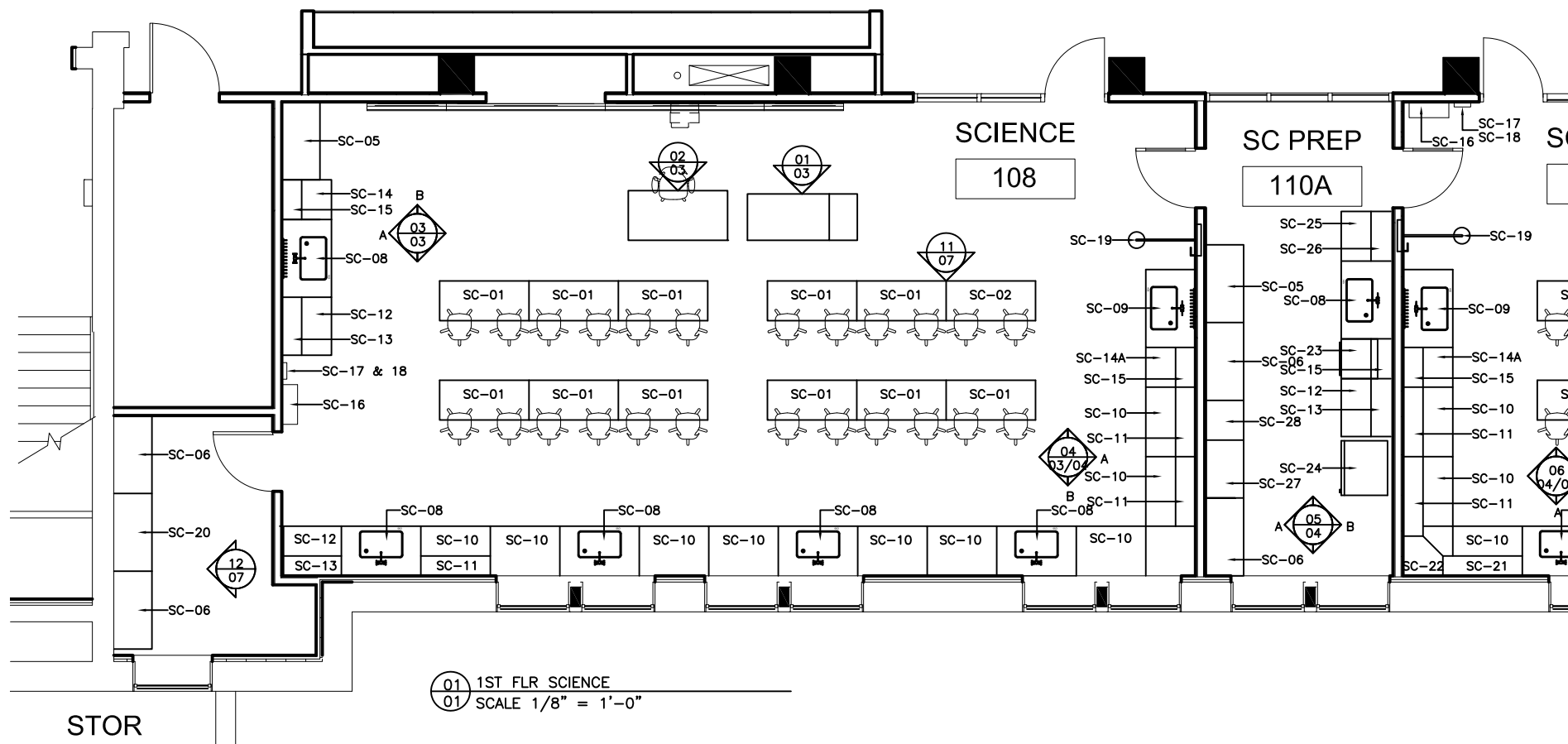
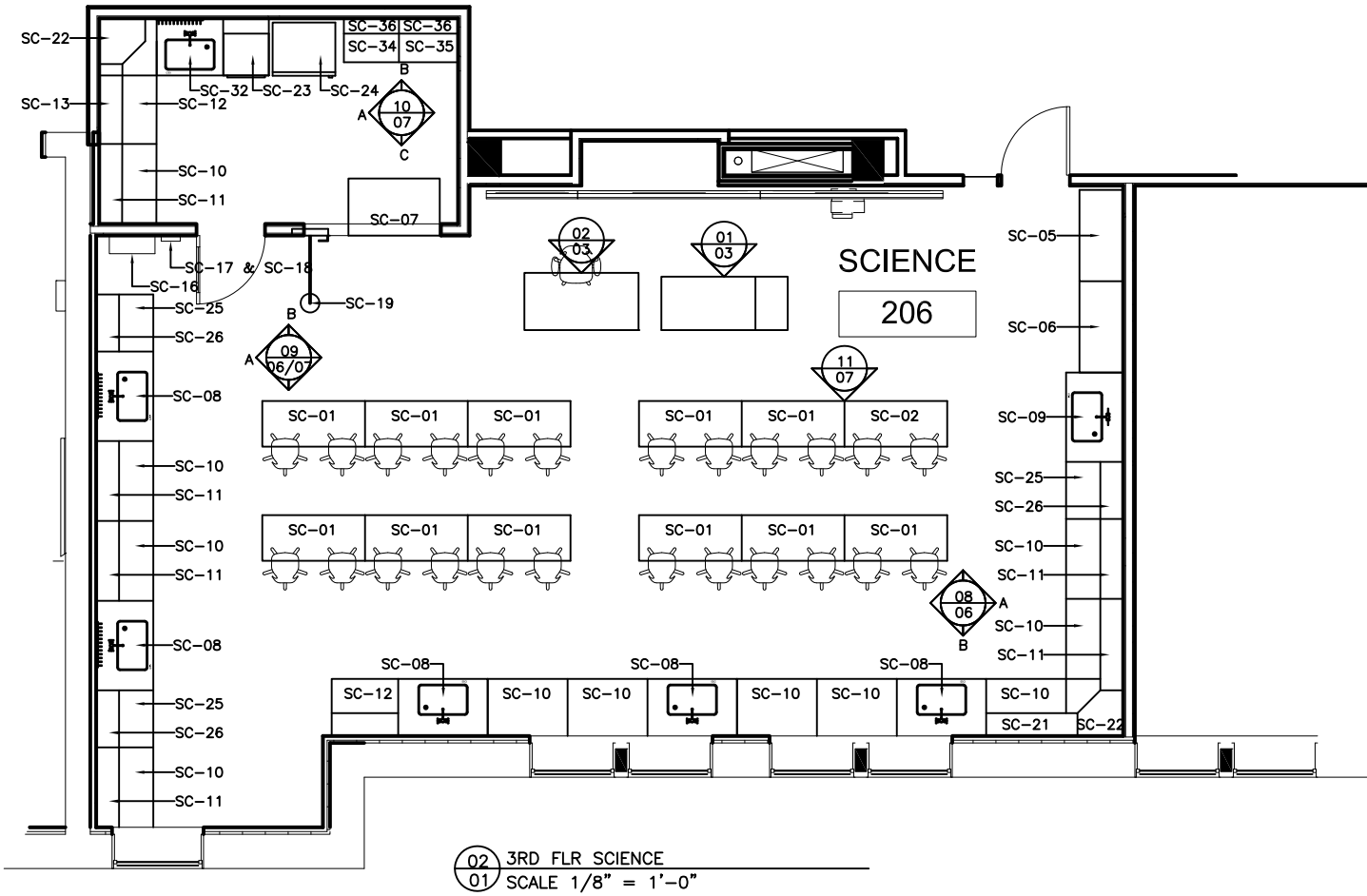






HART MS SCIENCE LABS
MCKINLEY MIDDLE SCHOOL BUILD-OUT
DISTRICT OF COLUMBIA PUBLIC SCHOOLS





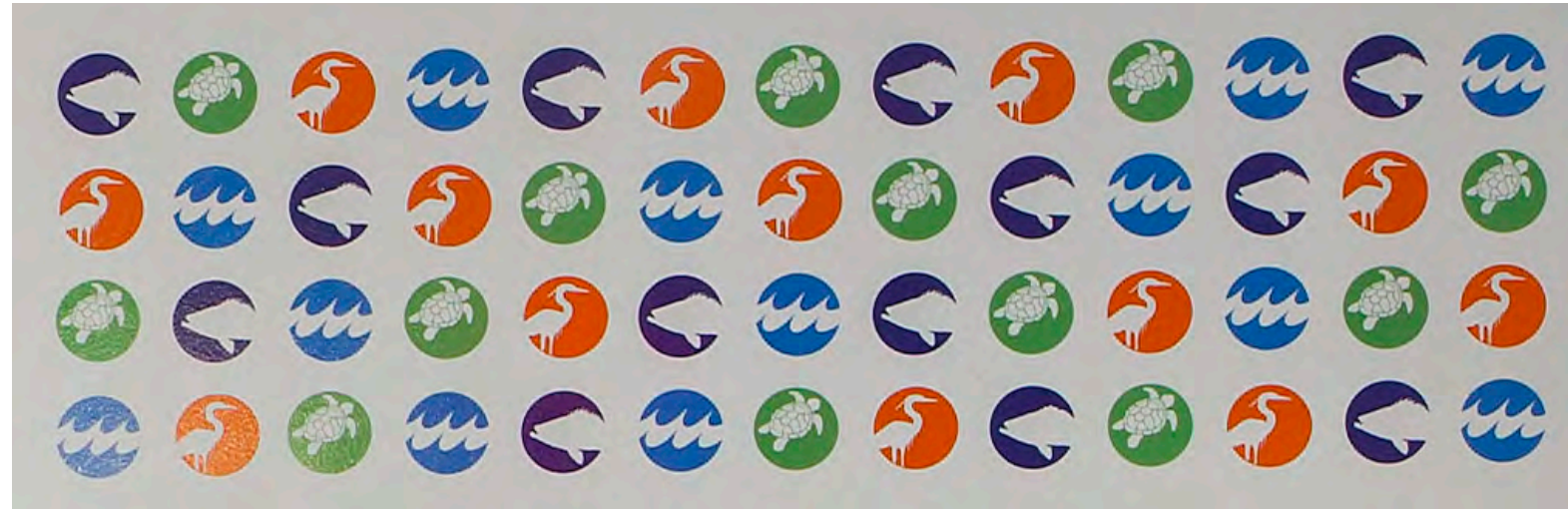
SCIENCE LAB DETAILS

MCKINLEY MIDDLE SCHOOL BUILD-OUT

DISTRICT OF COLUMBIA PUBLIC SCHOOLS







WAYFINDING

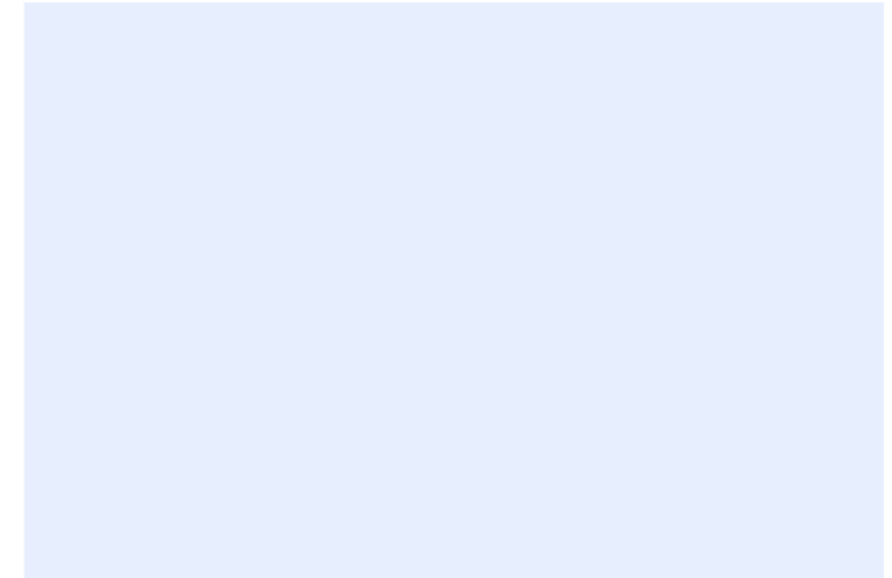
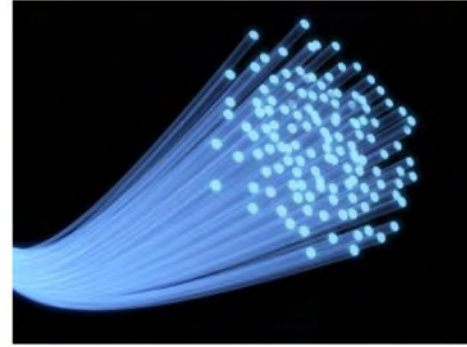
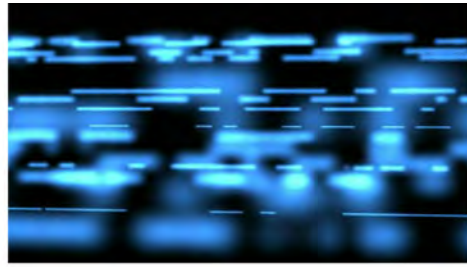
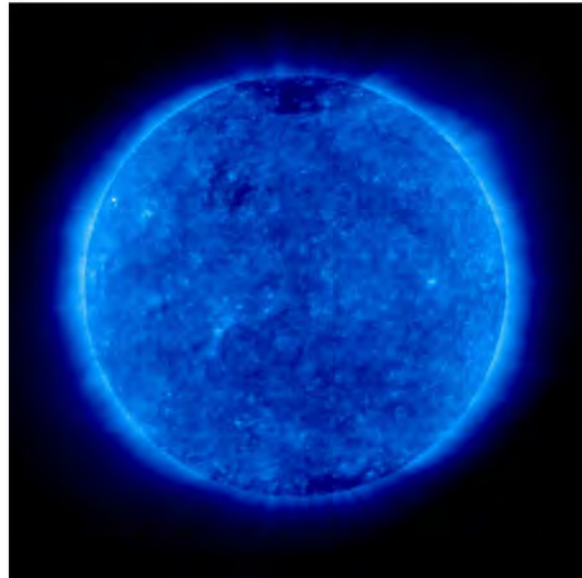
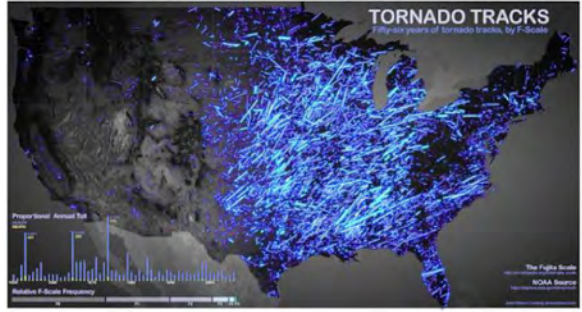
MCKINLEY MIDDLE SCHOOL BUILD-OUT
DISTRICT OF COLUMBIA PUBLIC SCHOOLS





450

400



COLOR PALETTE INSPIRATION

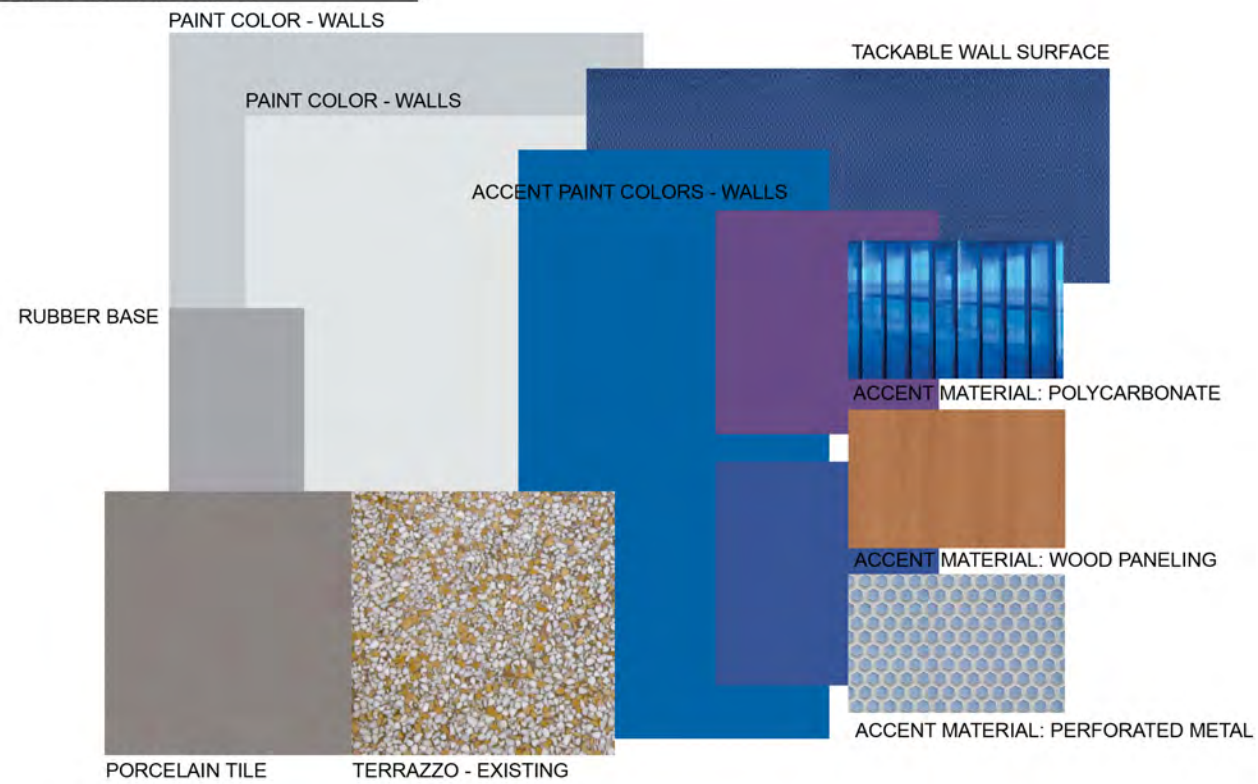
MCKINLEY MIDDLE SCHOOL BUILD-OUT

DISTRICT OF COLUMBIA PUBLIC SCHOOLS

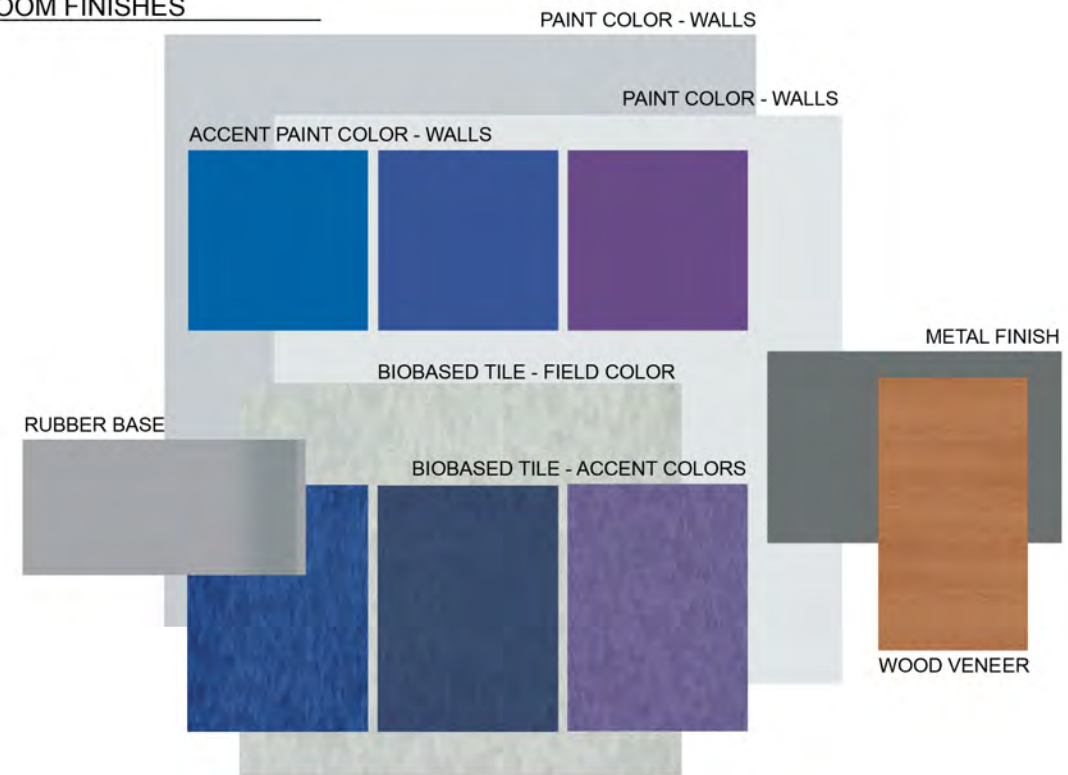


QUINN EVANS ARCHITECTS

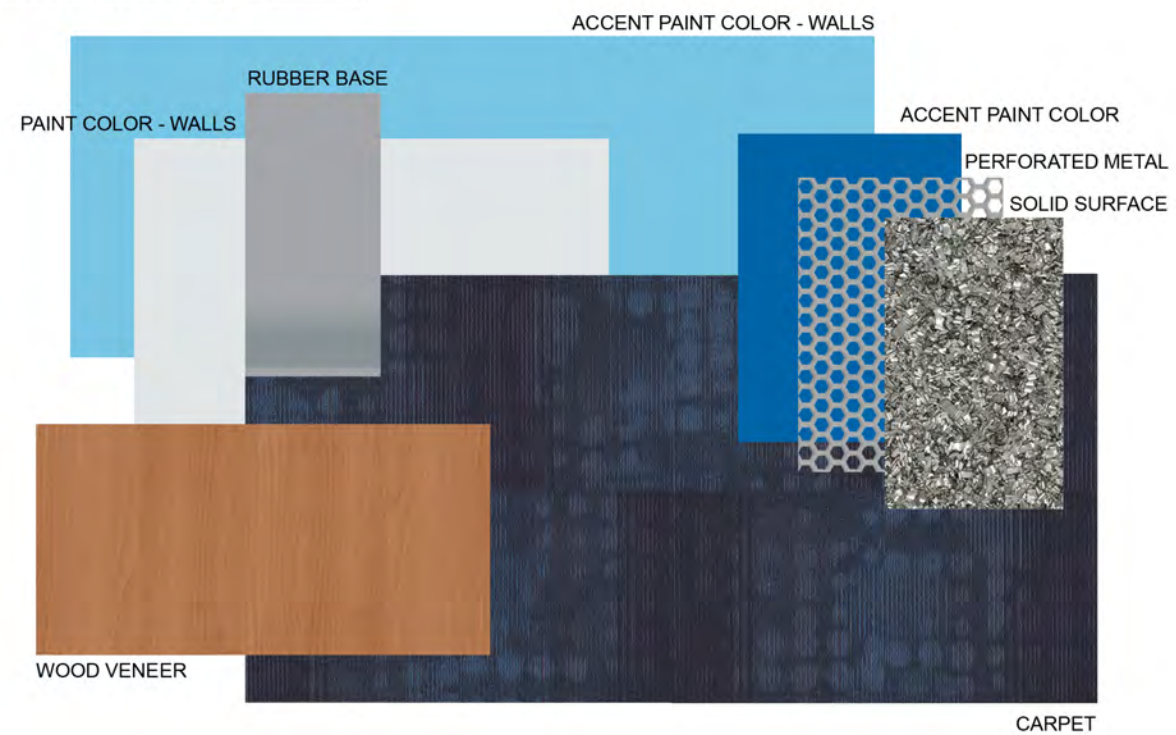
CORRIDOR FINISHES



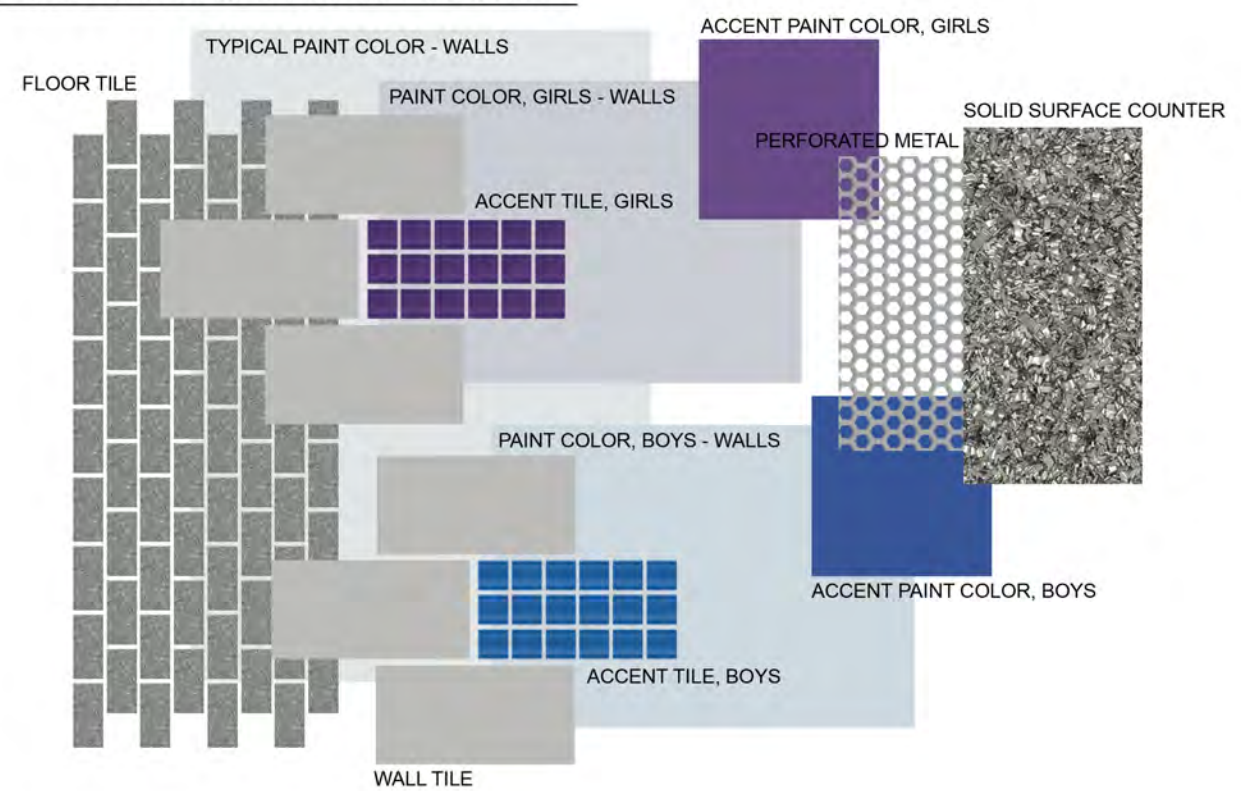
CLASSROOM FINISHES



ADMINISTRATIVE FINISHES



TOILET & LOCKER ROOM FINISHES

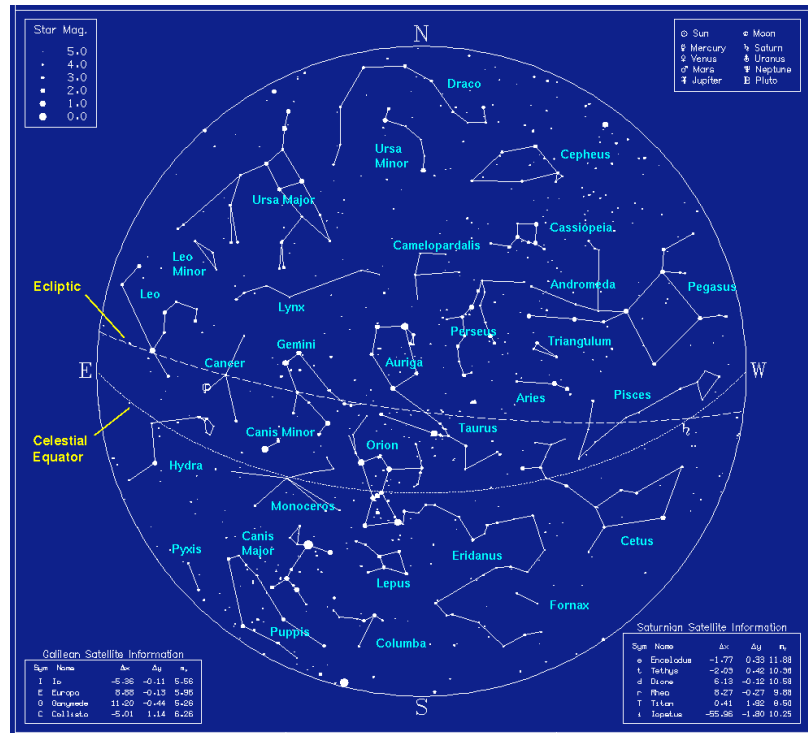
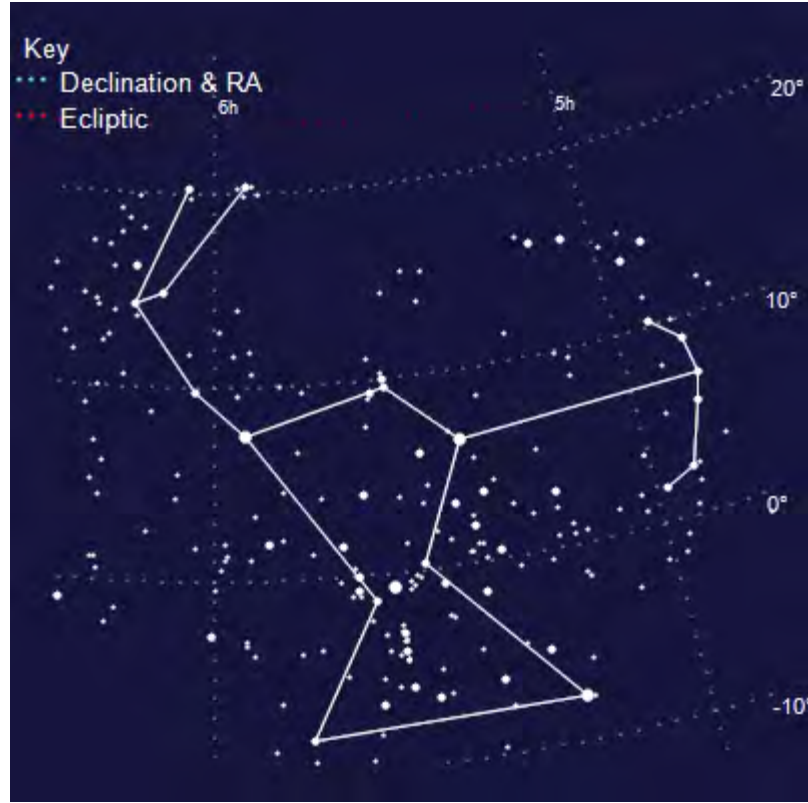


MATERIAL PALETTE

MCKINLEY MIDDLE SCHOOL BUILD-OUT
 DISTRICT OF COLUMBIA PUBLIC SCHOOLS

SIT PRESENTATION | 19 DECEMBER 2012

NAVIGATORS



DART FROGS



Dendrobatidae



SPIDERS / ARACHNIDS



Cobalt Blue Tarantula
Haplopelma lividum

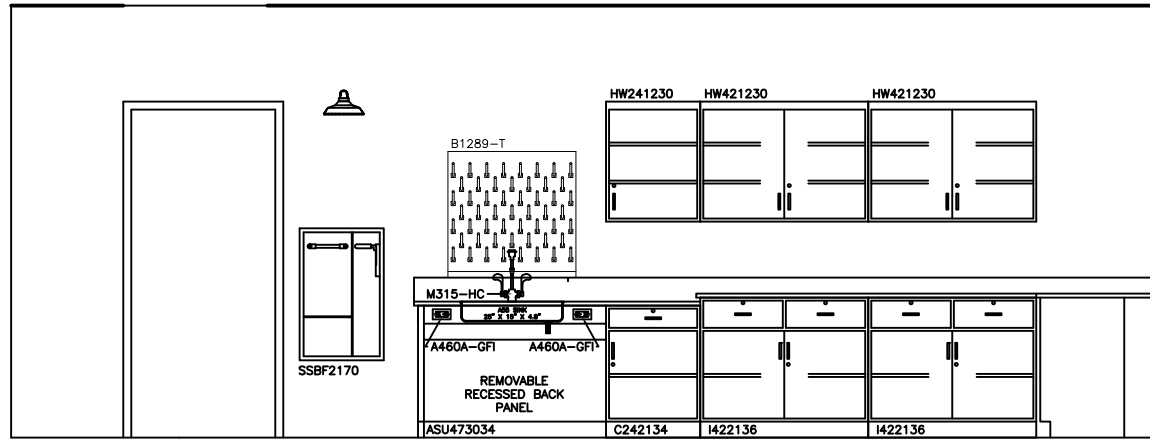
MASCOT IDEAS

MCKINLEY MIDDLE SCHOOL BUILD-OUT

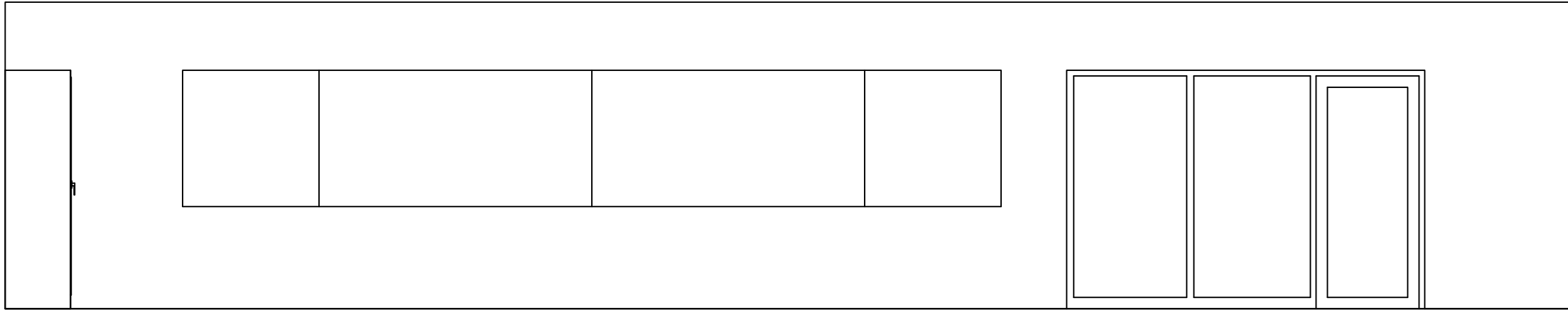
DISTRICT OF COLUMBIA PUBLIC SCHOOLS



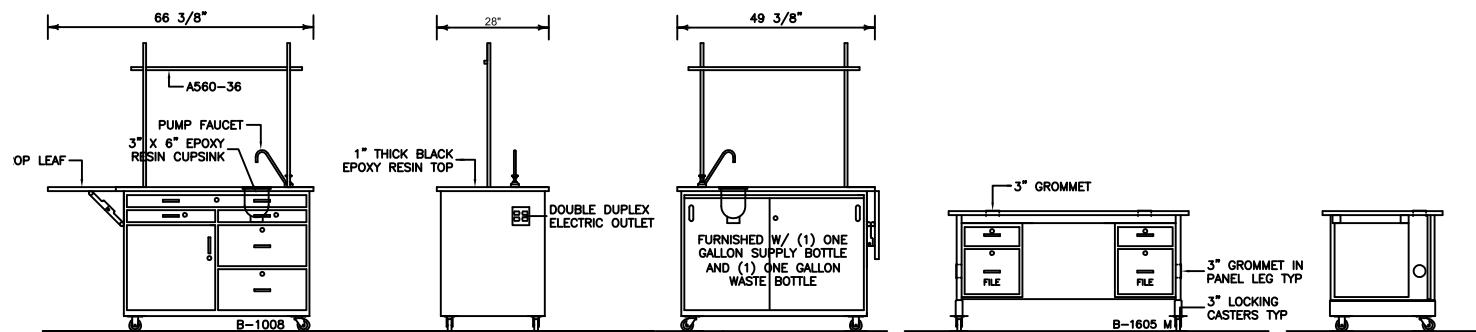
QUINN EVANS ARCHITECTS



04A ELEVATION 04A
03 SCALE 1/4" = 1'-0"



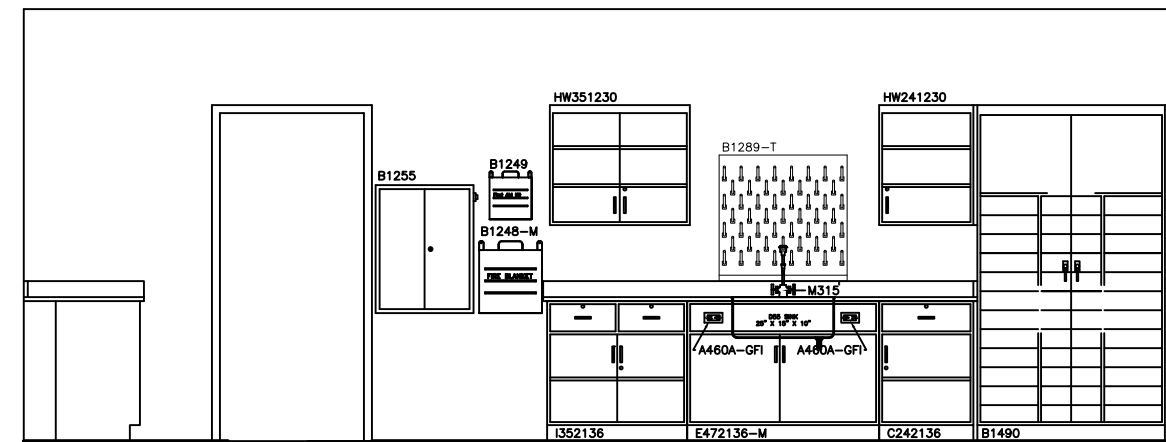
03B ELEVATION 03B
03 SCALE 1/4" = 1'-0"



01 ELEVATION 01
03 SCALE 1/4" = 1'-0"

02 ELEVATION 02
03 SCALE 1/4" = 1'-0"

END VIEW



03A ELEVATION 03A
03 SCALE 1/4" = 1'-0"

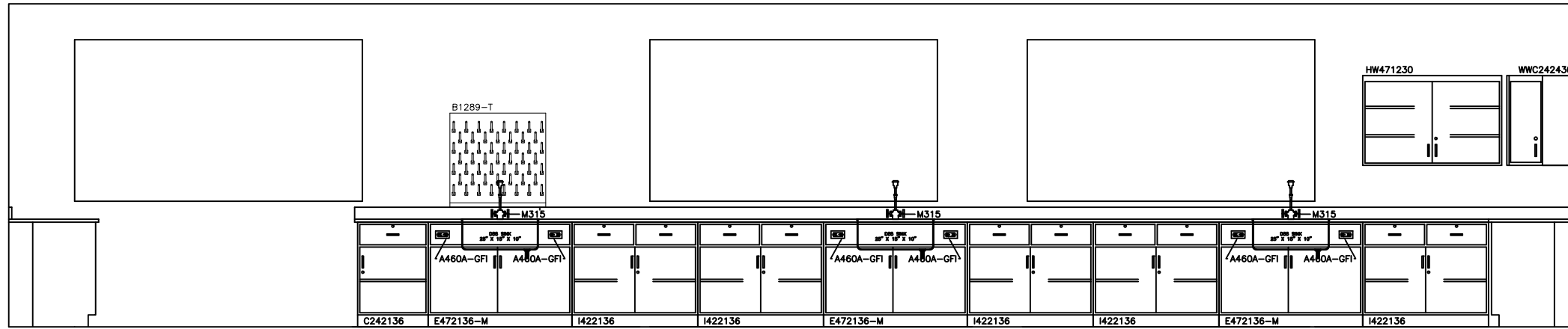
SCIENCE LAB DETAILS

MCKINLEY MIDDLE SCHOOL BUILD-OUT

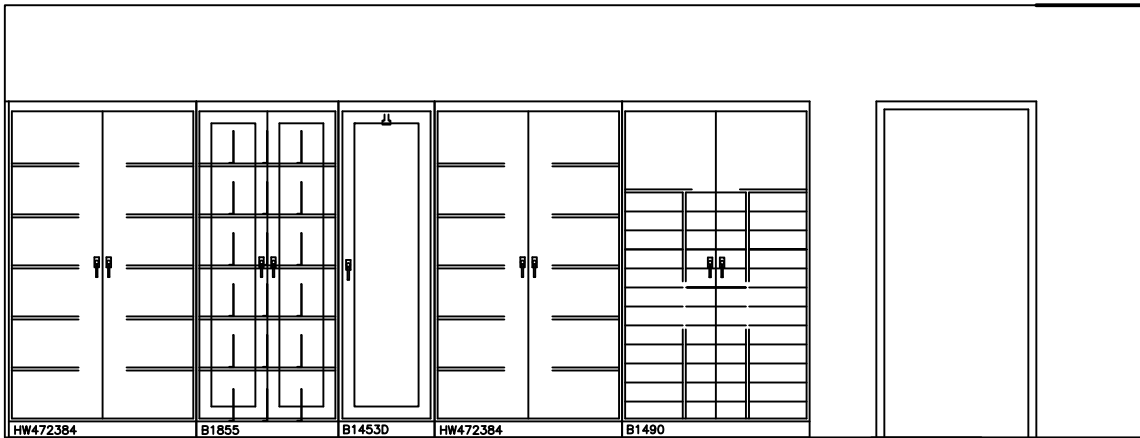
DISTRICT OF COLUMBIA PUBLIC SCHOOLS



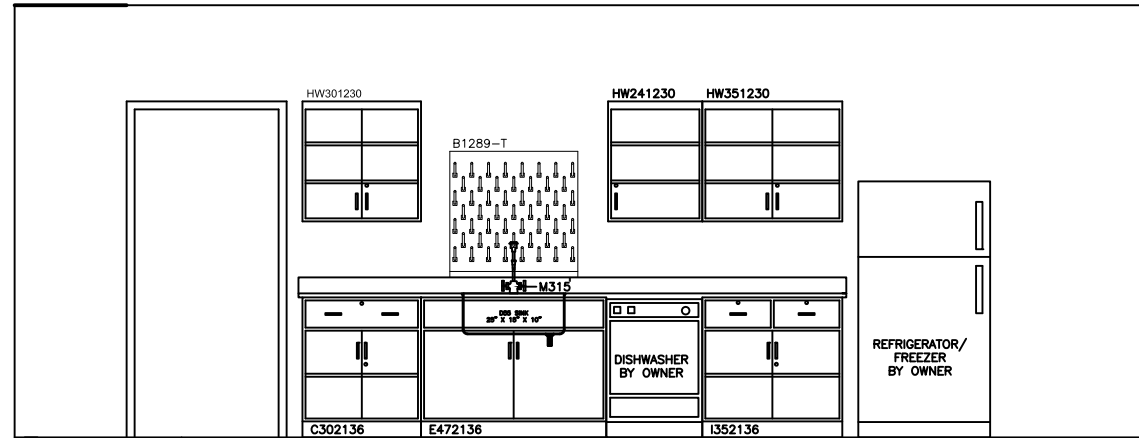
QUINN EVANS ARCHITECTS



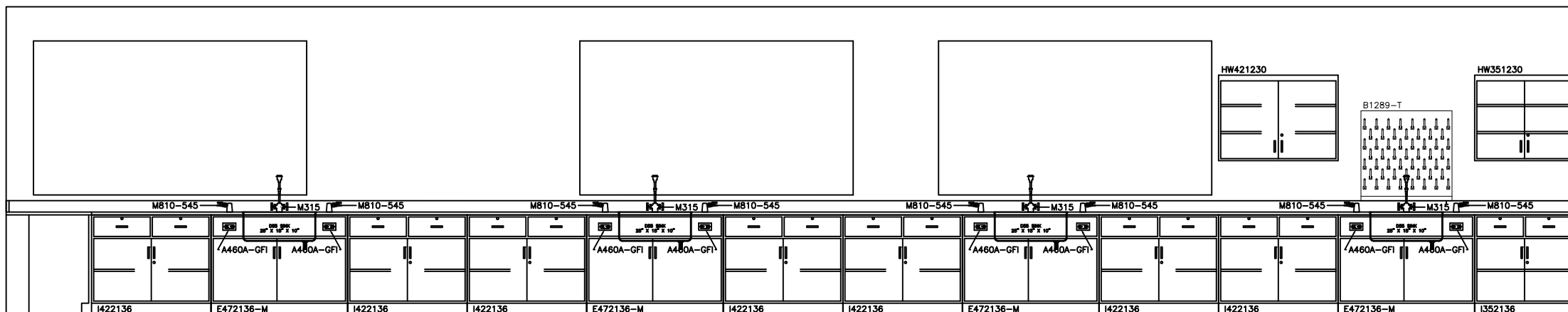
06A ELEVATION 06A
04 SCALE 1/2" = 1'-0"



05A ELEVATION 05A
04 SCALE 1/2" = 1'-0"

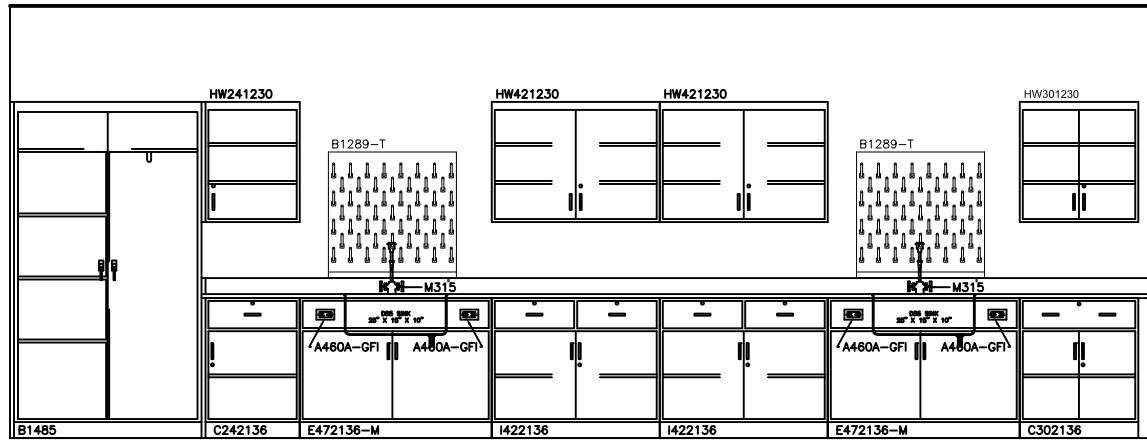


05B ELEVATION 05B
04 SCALE 1/2" = 1'-0"

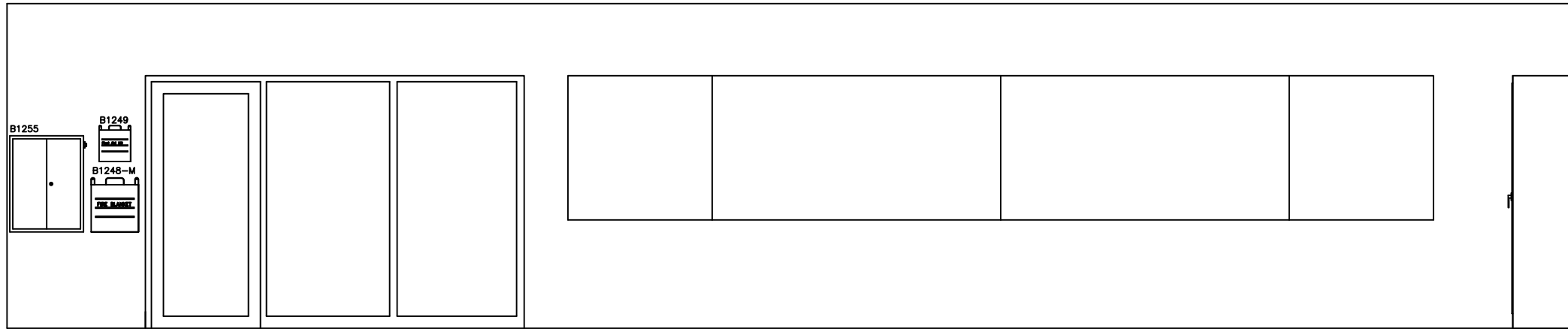


04B ELEVATION 04B
04 SCALE 1/4" = 1'-0"

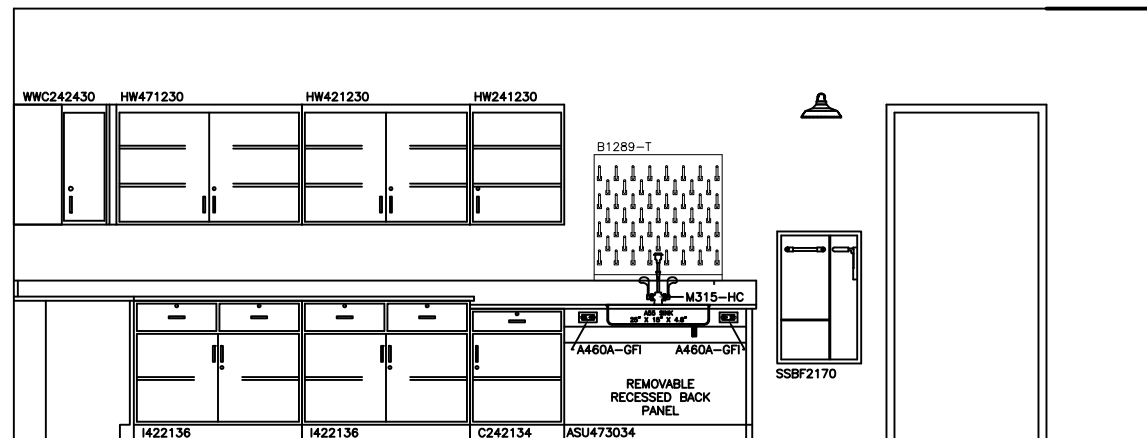
SCIENCE LAB DETAILS
MCKINLEY MIDDLE SCHOOL BUILD-OUT
 DISTRICT OF COLUMBIA PUBLIC SCHOOLS



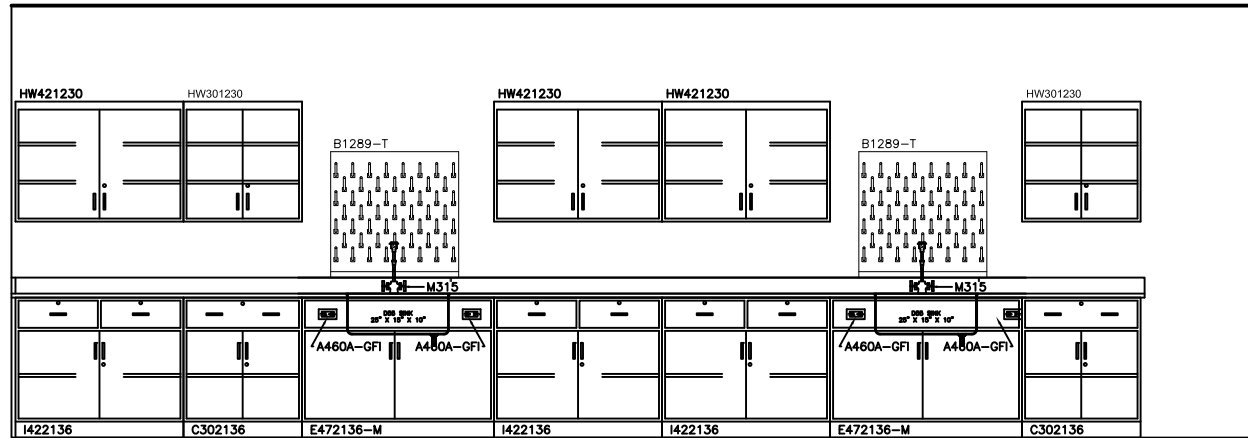
07B ELEVATION 07B
 05 SCALE 1/2" = 1'-0"



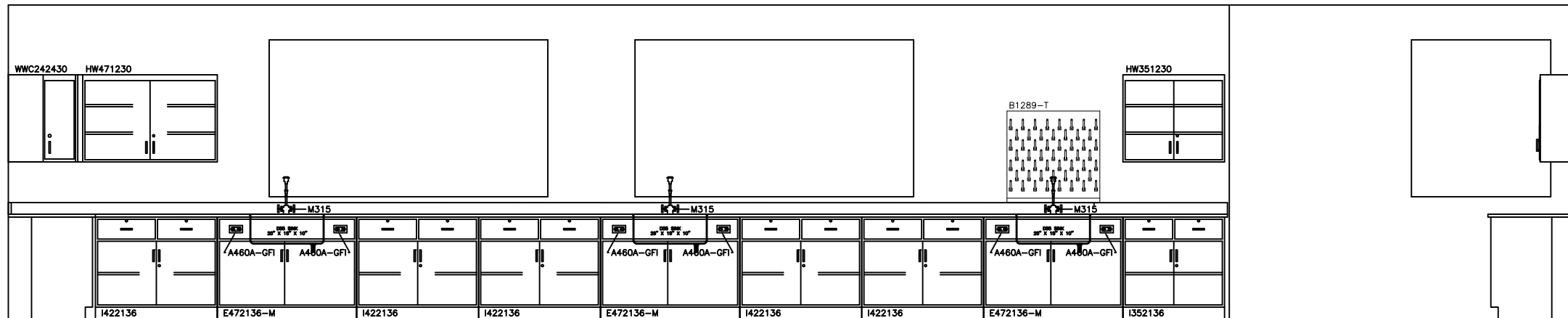
07A ELEVATION 07A
 05 SCALE 1/2" = 1'-0"



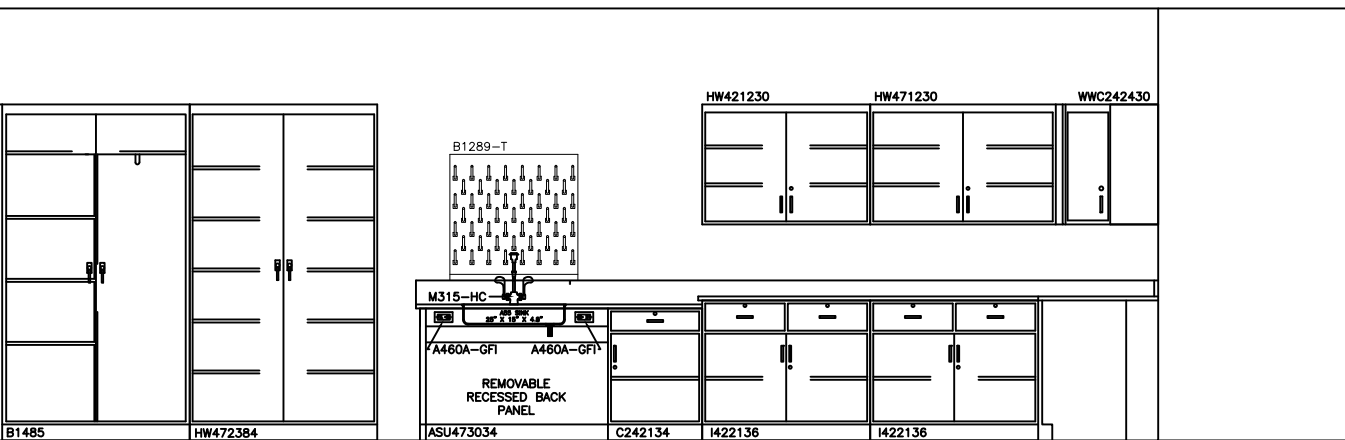
06B ELEVATION 06B
 05 SCALE 1/4" = 1'-0"



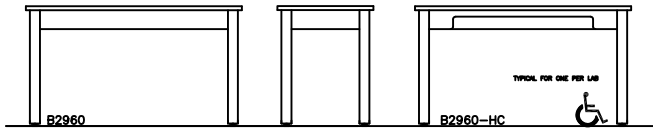
09A ELEVATION 09A
06 SCALE 1/2" = 1'-0"



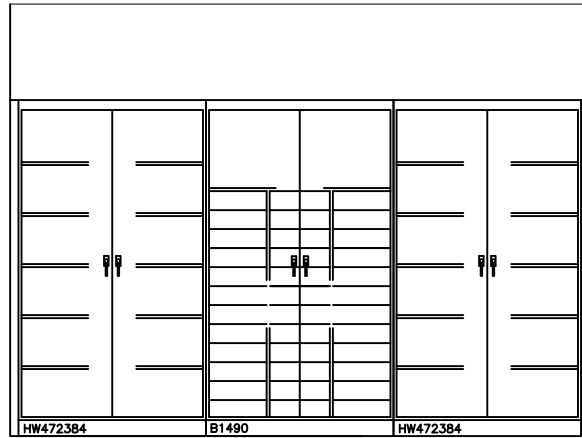
08B ELEVATION 08B
06 SCALE 1/2" = 1'-0"



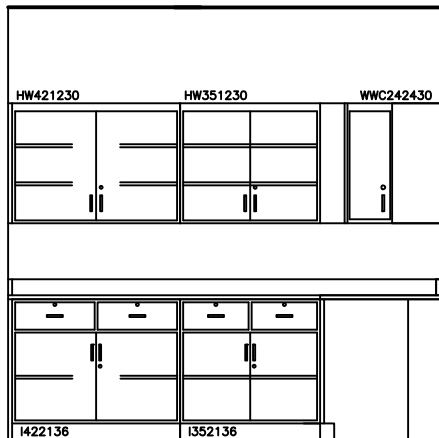
08A ELEVATION 08A
06 SCALE 1/4" = 1'-0"



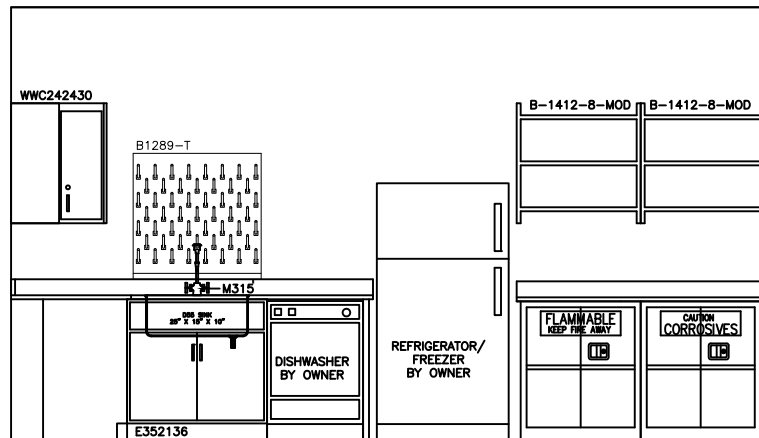
11 ELEVATION 11
07 SCALE 1/2" = 1'-0"



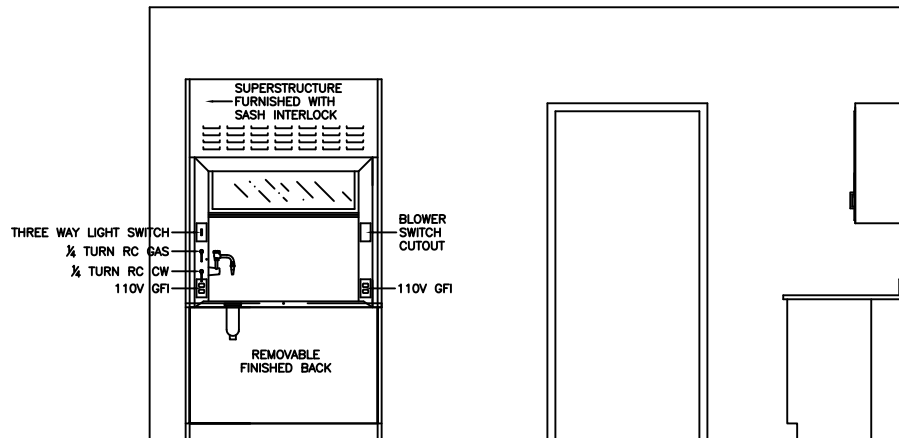
12 ELEVATION 12
07 SCALE 1/2" = 1'-0"



10A ELEVATION 10A
07 SCALE 1/2" = 1'-0"

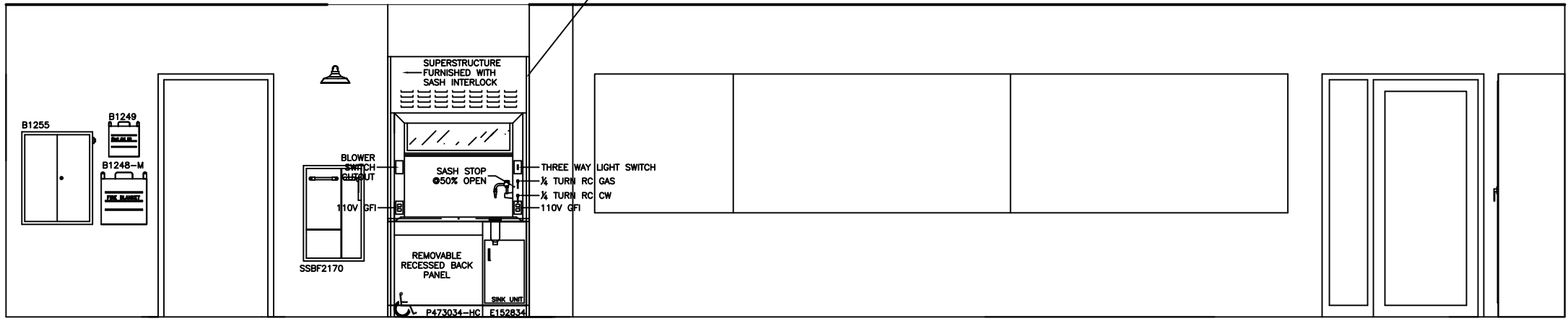


10B ELEVATION 10B
07 SCALE 1/2" = 1'-0"



10C ELEVATION 10C
07 SCALE 1/2" = 1'-0"

SIMILAR TO BMC MODEL #B-704-DS
CONSTANT VOLUME DBL. FACED AIRFOIL
FUMEHOOD SUPERSTRUCTURE.
HOOD TECH DATA:
AT 100 F.P.M. W/ SASH FULL OPEN:
C.F.M. = 1307 & S.P. DROP = .61



09B ELEVATION 09B
07 SCALE 1/4" = 1'-0"

SCIENCE LAB DETAILS
MCKINLEY MIDDLE SCHOOL BUILD-OUT
DISTRICT OF COLUMBIA PUBLIC SCHOOLS